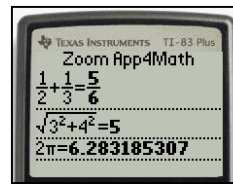


Latest apps & OS for 84

http://education.ti.com/educationportal/sites/US/nonProductMulti/apps_latest.html?bid=5

<http://www.zoommath.com/app4math>



Zoom Math User Guide

http://www.zoommath.com/App4MathUserGuide_1_00.pdf

<http://www.kaputcenter.umassd.edu/products/software/>

http://education.ti.com/educationportal/sites/US/productDetail/us_simcalc_83_84.html

This App employs interactive motion simulations, visualization tools and the CBR™ Animator (that replays imported motions) to enliven and deepen understanding of both traditional core Algebra material and the ideas underlying Calculus at the same time - for ALL students!

Interactive graphs and formulas make things move, adding a new depth of meaning for key ideas. MathWorlds uses the familiar and flexible structure of computer documents and menus connected to the curriculum.

Interactive graphs and functions control dynamic representations, adding a new depth of meaning for key ideas underlying the mathematics of change and variation that crosses many grades. SimCalc MathWorlds™ uses the familiar and flexible structure of computer documents and menus connected to the curriculum.

In addition, SimCalc MathWorlds™ works as a device app on its own or in conjunction with a parallel version of the software (see www.simcalc.umassd.edu/software) to connect students' work together using the TI-Navigator™ wireless system.

Our curriculum activities exist as appvars and computer documents which are aligned with the NCTM Principles and Standards and some State Frameworks.

May 12-12:44 PM

Other UPCOMING events

-***Thur, Fri, June 26-27 – T³ Regional Conference**, Lincoln-Way Central High School, 40 miles SW of Chicago

<http://www.lw210.org/T3Conference/index.htm>

-***Sat, June 28-29 – USACAS 2008, 5th US Conference on Computer Algebra System in Secondary Mathematics**, at New Trier High School, Northfield, IL, see <http://mecas.org/conference.php> for more details

-***July 7-11, 2008 SmartTIap Calculus Summer Institute** at Covenant Christian High School

<http://cs3.covenantchristian.org/bird/SmartTIap.htm>

Next Indy TI User Group meeting?

July?
Aug?

May 12-1:31 PM

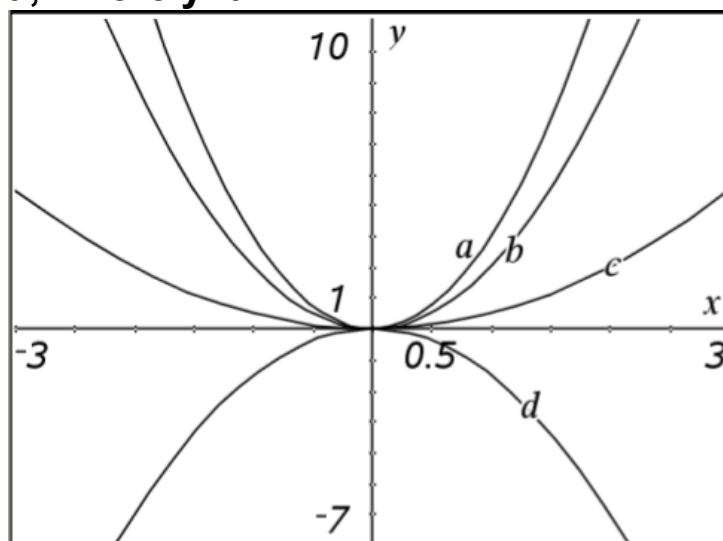
Hot topic - technology will you use next year? *discussion*

What factors go in to making the decision which TI devise to use?

May 12-12:42 PM

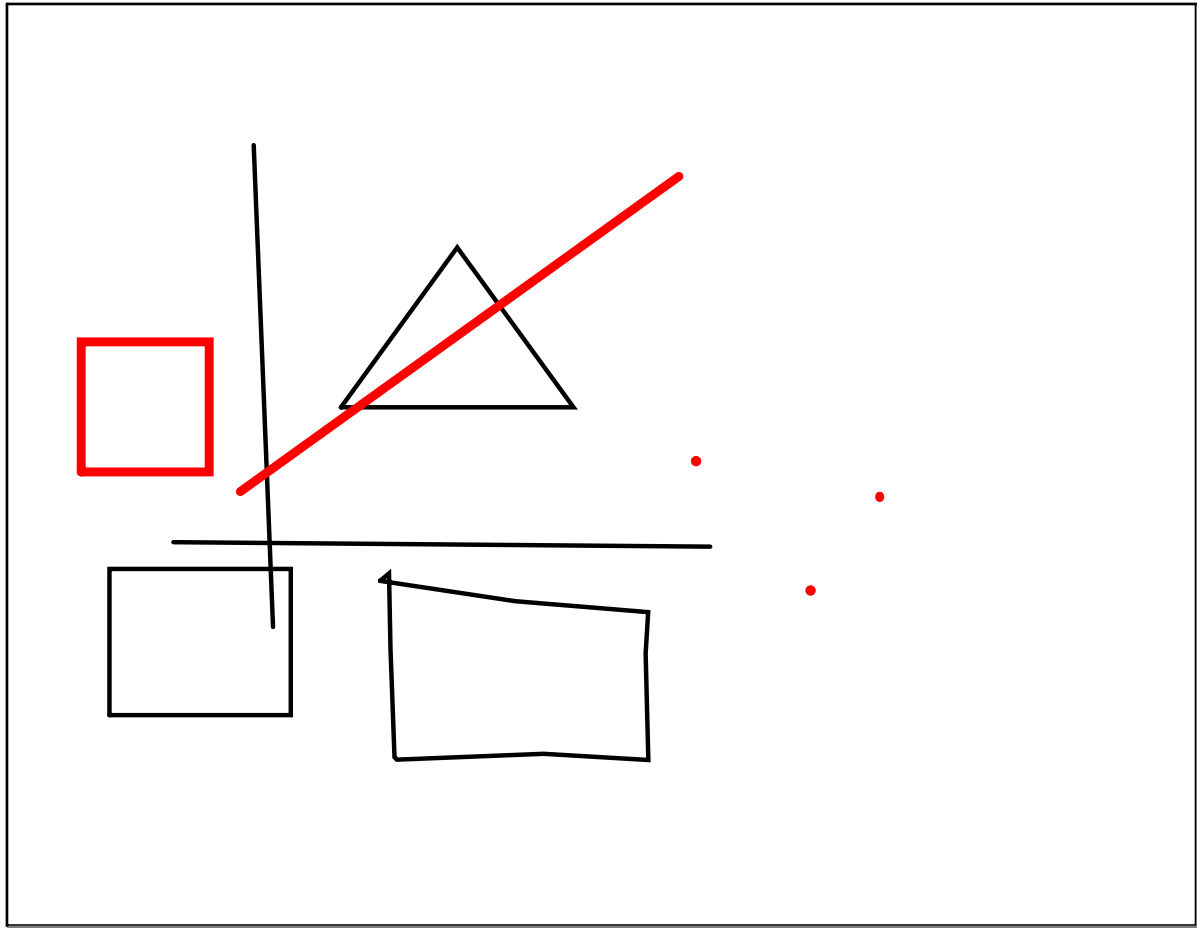
1 Which of the following graphs has the largest value for a , where $y=ax^2$

- A a
- B b
- C c
- D d



click on the above graph to dynamically explore the answer

May 12-1:47 PM



May 12-4:57 PM

QuadraticSpread.tns